

SPRING FLOWERS

 CANADA ANEMONE <i>ANEMONE CANADENSIS</i>	 BLOODROOT <i>SANGUINARIA CANADENSIS</i>	 CROCUS <i>Crocus vernus</i>	 TRILLIUM <i>Trillium grandiflorum</i>	 TROUT LILY <i>Erythronium americanum</i>	 DUTCHMAN'S BREECHES <i>Dicentra cucullaria</i>
 STAR OF BETHLEHEM <i>Ornithogalum umbellatum</i>	 WILD GINGER <i>Asarum canadense</i>	 SWEET WOODRUFF <i>Galium odoratum</i>	 COMMON BLUE VIOLET <i>Viola papilionacea</i>	 MAYAPPLE <i>Podophyllum peltatum</i>	 SOLOMON'S SEAL <i>Polygonatum pubescens</i>

SUMMER FLOWERS

 BLADDER CAMPION <i>Silene vulgaris</i>	 CONE FLOWER <i>Echinacea purpurea</i>	 BLACK-EYED SUSAN <i>Rudbeckia hirta</i>	 IRONWEED <i>Veronia gigantea</i>	 DAME'S ROCKET <i>Hesperis matronalis</i>	 COLUMBINE <i>Aquilegia canadensis</i>
 WILD BERGAMOT <i>Monarda fistulosa</i>	 LADY'S MANTLE <i>Alchemilla mollis</i>	 HEAL ALL <i>Prunella vulgaris</i>	 TRUMPET VINE <i>Campsis radicans</i>	 BLUE VERVAIN <i>Verbena hastata</i>	 RED OSIER DOGWOOD <i>Cornus sericea</i>

FALL FLOWERS

 ASTERS <i>Symphyotrichum</i>	 GOLDENROD <i>Solidago canadensis</i>	 COMMON TANSY <i>Tanacetum vulgare</i>	 MILKWEED <i>Asclepias syriaca</i>	 OXE EYE <i>Heliopsis scabra</i>	 SEDUM <i>Sedum spectabile</i>
---	--	---	---	--	---

TREES

 AMERICAN BEECH <i>Fagus grandifolia</i>	 AMERICAN ELM <i>Ulmus americana</i>	 BALSAM FIR <i>Abies balsamea</i>	 BALSAM POPLAR <i>Populus balsamifera</i>	 BASSWOOD <i>Tilia americana</i>	 BLACK WALNUT <i>Juglans nigra</i>
 BUR OAK <i>Quercus macrocarpa</i>	 BUTTERNUT <i>Juglans cinerea</i>	 SINGLESEED HAWTHORNE <i>Crataegus monogyna</i>	 EASTERN RED CEDAR <i>Juniperus virginiana</i>	 EASTERN WHITE CEDAR <i>Thuja occidentalis</i>	 FLOWERING CRABAPPLE <i>Malus</i>
 FLOWERING DOGWOOD <i>Cornus florida</i>	 MANITOBA MAPLE <i>Acer negundo</i>	 OHIO BUCKEYE <i>Aesculus glabra</i>	 SERVICEBERRY <i>Amelanchier arborea</i>	 SHAGBARK HICKORY <i>Carya ovata</i>	 SUGAR MAPLE <i>Acer saccharum</i>
 WHITE SPRUCE <i>Picea glauca</i>	<div>LEGEND</div> <div> NATIVE</div> <div> NOT NATIVE</div> <div> ENDANGERED</div>				

INVASIVE SPECIES

Tough, aggressive and highly reproductive, these garden bullies out-compete native plants, disrupt natural ecosystems and are difficult to eradicate. We work hard to keep them in check at the garden – pulling, digging, pruning, snipping off flower heads.

Four to watch for:

 GARLIC MUSTARD <i>Alliaria petiolate</i>	 DOG-STRANGLING VINE <i>Vincetoxicum rossicum</i>	 SWEET WHITE CLOVER <i>Mellilotus albus</i>	 EUROPEAN BUCKTHORN <i>Rhamnus cathartica</i>
--	--	--	--



COBOURG  
ECOLOGY GARDEN



COVER PHOTO © DEB HULME

MAP & GUIDE



# HISTORY

The Cobourg Ecology Garden (CEG) was conceived in 1995 by Minnie Pennell, an indomitable local citizen who had a big idea and the zeal to see it through. Minnie pulled together a committee, persuaded Legion Village to allocate some land and, on Earth Day 1996, she and group of staunch supporters launched the garden with a sunrise ceremony around a new bur oak. Since then, it has evolved and expanded to almost half an acre between Hibernia and Durham Streets and is maintained by a dedicated group of volunteers.

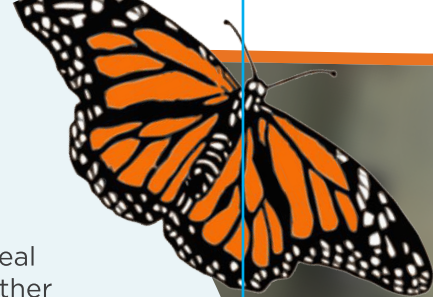
There have been hundreds of hands in the dirt over the years, friendships formed, lessons offered and received. CEG is a magnetic place that attracts workers and wanderers alike, and kindles many casual conversations between strangers that ultimately create a strong sense of community.

We invite you to explore the garden through all the seasons and experience the peace and beauty of this urban oasis.

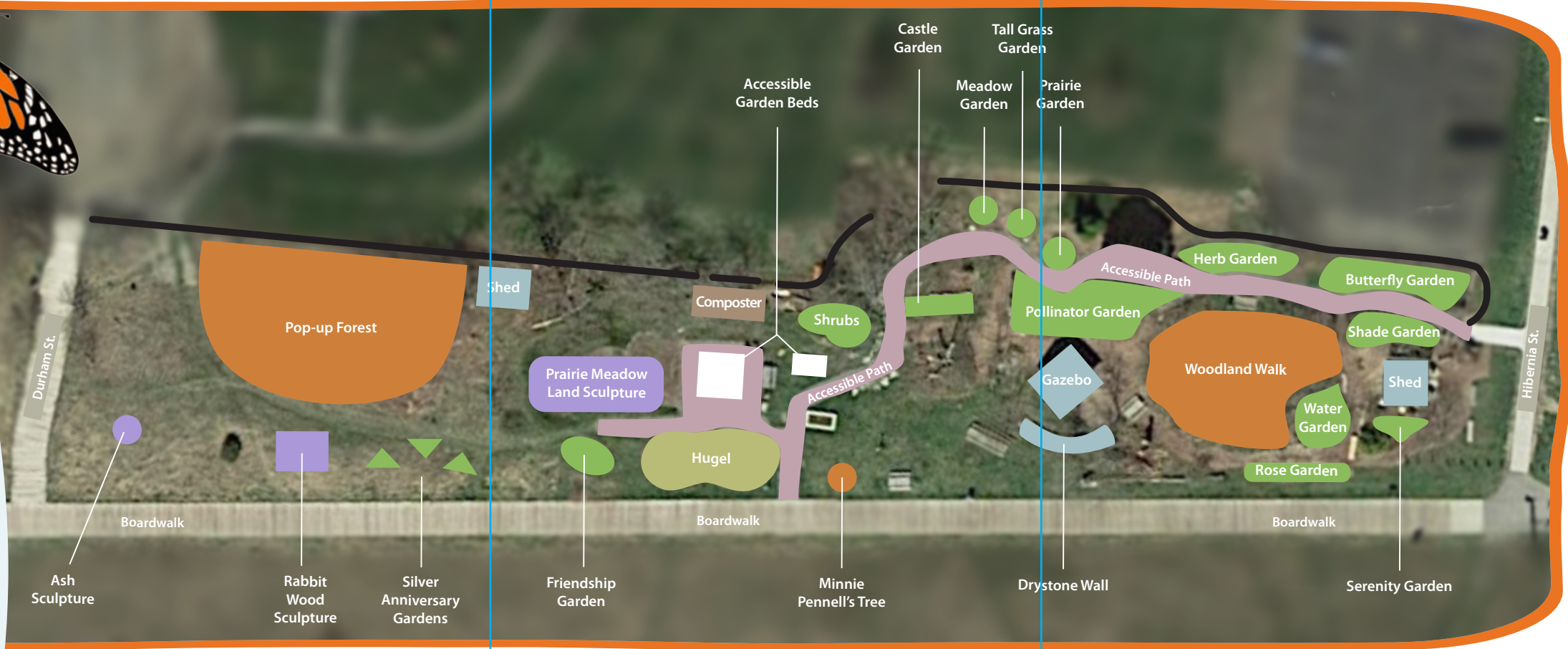
# BENEFITS OF NATIVE PLANTS

Native plants are those that have evolved naturally in a particular region without human intervention. They offer tremendous diversity in colour and form, are usually hardy, drought tolerant, easy to maintain and provide valuable habitat and food supply for insects, birds and mammals. What's not to love!

While the Ecology Garden includes some non-native species, we strive to use native plants as much as possible because they promote biodiversity and support a healthy ecosystem. Check out the North American Native Plant Society for more information on trees, shrubs and perennials.



## KEY FEATURES



### POP-UP FOREST

A prayer for the future, the pop-up forest in the west end of the garden was conceived in 2019. With the help of the Cobourg Parks Department, we have planted American Elms, Ohio Buckeyes, Balsam Firs and White Spruce trees. These will not reach maturity for many years, but we hope the children of today will be able to sit in their shade, hear the gentle rustle of leaves and inhale the tang of evergreens when they have children of their own.

### WOOD SCULPTURES

The two large tree trunks at the west end of the garden were salvaged from local properties in 2020 and brought to the garden as sculptural elements and to educate about the importance of urban trees. The one that looks like a rabbit is from a giant Manitoba maple; the other is from a 130-year-old ash that was killed by the invasive emerald ash borer beetle.

### PRAIRIE MEADOW LAND SCULPTURE

The three berms north of the hugel demonstrate low-maintenance techniques. The two on the west side are covered with 15-20 cm of silt loam and have been planted with a mixture of fescues that don't need regular mowing. The easternmost berm has sandy soil and has been planted with a diverse selection of drought-tolerant species that require little, if any, watering.

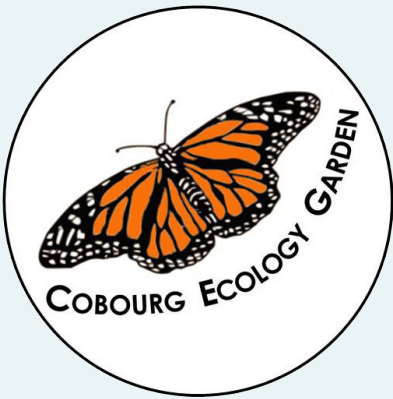
### HUGEL

A hugel is a raised bed constructed of layers of wood, plant waste, compost and soil, which together form a fertile environment for growing plants. Hugelkultur is a German gardening technique that's been embraced by permaculture advocates around the world. CEG's hugel was created in 2016, using trunk sections of a Manitoba maple that had been cut down in the east end of Cobourg. The log core helps retain moisture and provides habitat for voles and other wildlife. As the wood decomposes, the mound shrinks and eventually the structure will need to be rebuilt.

“

Everything that slows us down and forces patience, everything that sets us back into the slow circles of nature, is a help. Gardening is an instrument of grace.

May Sarton



For more information, visit [Cobourgecologygarden.ca](http://Cobourgecologygarden.ca)

Follow us on



116 Hibernia St. Cobourg, Ontario. K9A 3J8

[ceginquiries@gmail.com](mailto:ceginquiries@gmail.com)